

PART OF N.E. 1/4 OF SEC. 23, T.5N., R.1W., S.L.B. & M.

# BONNEVILLE TERRACE SUBDIVISION NO. 2

170

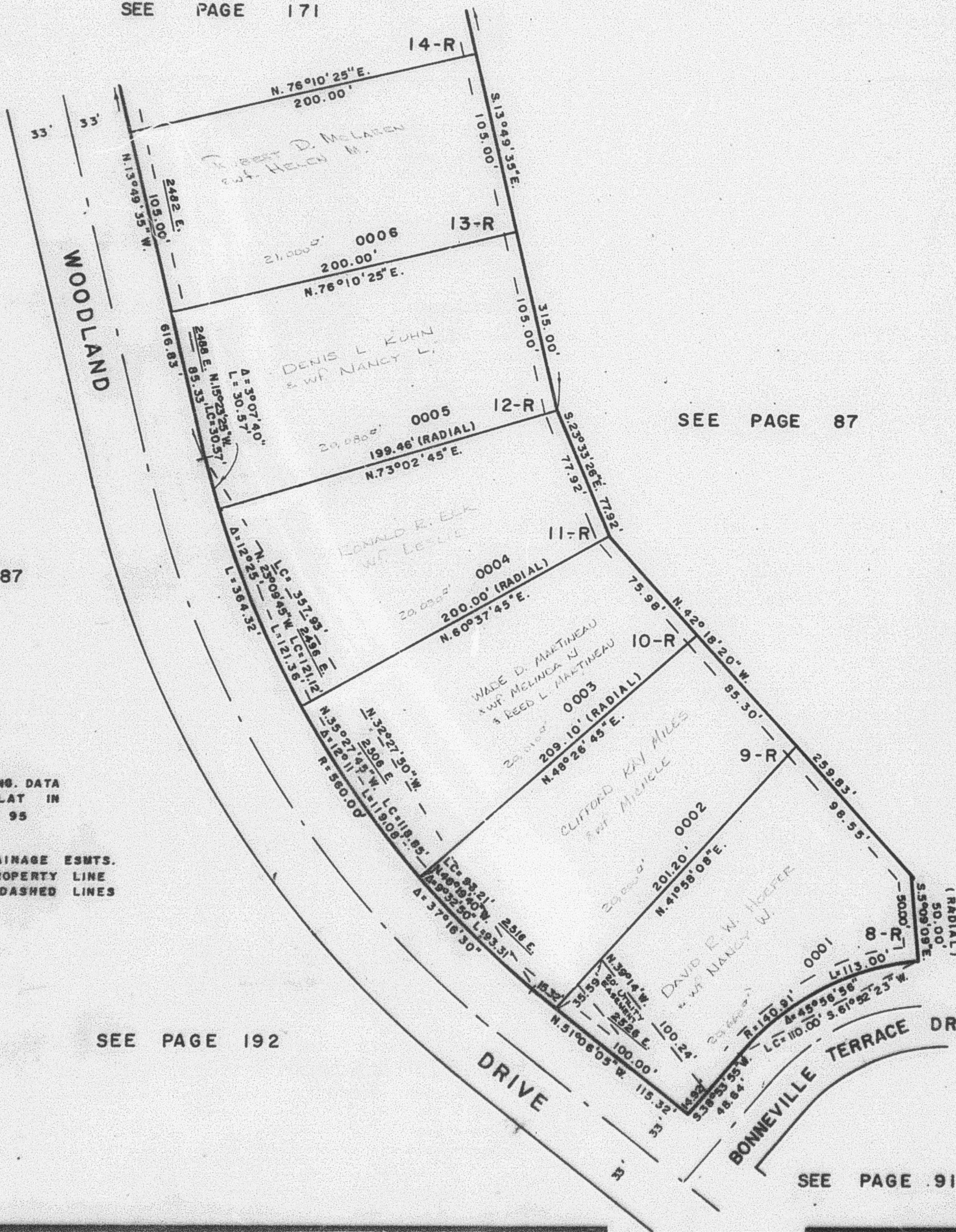
TAXING UNIT: 159

IN WEBER COUNTY

PREFIX: 07-170

SCALE 1"=50'

SEE PAGE 171



SEE PAGE 87

SEE PAGE 87

FOR COMPLETE ENG. DATA  
SEE ORIG. DED. PLAT IN  
BOOK 18 PAGE 95

7' UTILITY & DRAINAGE ESMTS.  
EACH SIDE OF PROPERTY LINE  
AS INDICATED BY DASHED LINES

20' UTILITY EASEMENT OVER  
AND ACROSS LOTS 9-R THROUGH  
18-R, INCLUSIVE, RELEASED  
(1193-898)